

MARK SAUNDERS LUXURY HOMES™



Signature Series Homes

Welcome to Mark Saunders Luxury Homes®. Thank you for choosing our team to prepare a custom design just for you. During our 26 years of experience, we have successfully designed and constructed hundreds of homes for the most discerning clients. Exceeding your expectations is our fundamental objective.

Our architectural innovation, superior craftsmanship, environmental preservation and service long after sale, are well known in Eastern North Carolina. Central to our philosophy it is our belief each and every home should reflect your individual taste and lifestyle and when complete, stand as a unique collaboration between your vision and our skills.

Our attention to every detail throughout each home is evident. Texture variation, historic elements, whimsical color, durable materials, and many other well planned, well selected components all come together to create a masterfully built home that will be functional and beautiful for a lifetime.

I hope that these drawings will provide a good starting point for the realization of your ideas. When you are ready for the next step, Mark Saunders Luxury Homes will be as well.

Sincerely,

A handwritten signature in black ink that reads "Mark A. Saunders". The signature is written in a cursive style with a large initial "M".

Mark A. Saunders



FRONT ELEVATION

The Bartley



Dimensions and square footage are approximate and may vary. Illustrations and floor plans are artist's conceptual renderings and are subject to change. Specifications, features, materials and prices are subject to change without Notice. Homes and site plans do not represent specifications defined in the Master Declaration of Covenants, Conditions, Restrictions, Easements, and Architectural Guidelines.

SGMS1b-2710-M11.8.7.11



the COASTAL
COMPANIES

**MARK
SAUNDERS**
LUXURY HOMES.

Mark A. Saunders

This drawing represents an instrument of service for the exclusive use of Coastal Construction and its agents. It therefore, remains the property of such and may not be reproduced in whole or in part without the written consent of Mark A. Saunders.

© Copyright, Coastal Construction of Eastern NC, Inc. - 2011

The Bartley

Total Heated: 2710

Bedrooms: 3

Baths: 3 1/2

Width: 58'

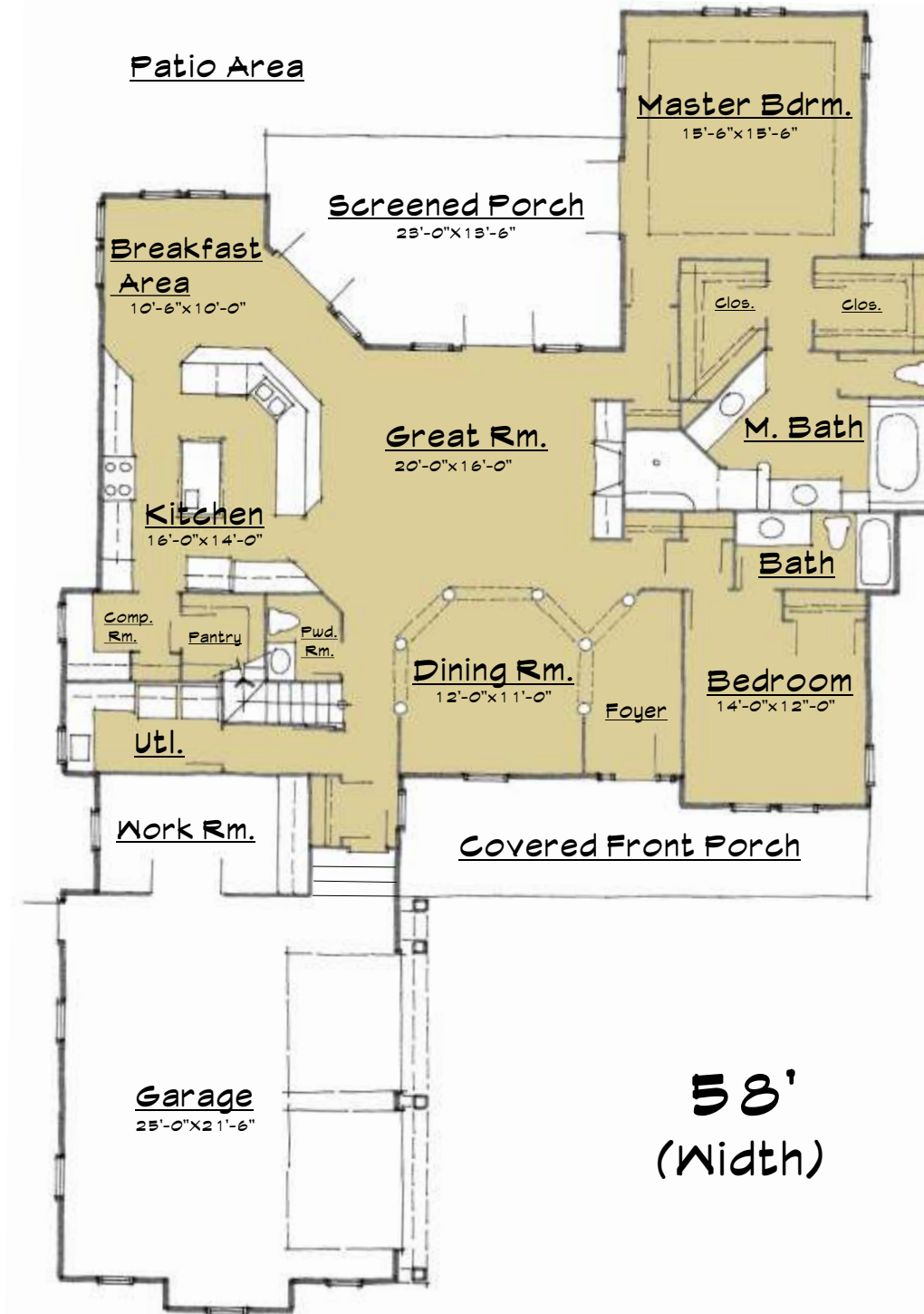
Depth: 87'

1st Floor: 2140

2nd Floor: 570

Garage Bonus: Optional
Covered Porches: 498

87'
(Depth)



58'
(Width)

FIRST FLOOR PLAN

The Bartley



Dimensions and square footage are approximate and may vary. Illustrations and floor plans are artist's conceptual renderings and are subject to change. Specifications, features, materials and prices are subject to change without Notice. Homes and site plans do not represent specifications defined in the Master Declaration of Covenants, Conditions, Restrictions, Easements, and Architectural Guidelines.

SGMS1b-2710-M11.8.7.11



the COASTAL COMPANIES

MARK SAUNDERS
LUXURY HOMES.

Mark A. Saunders

This drawing represents an instrument of service for the exclusive use of Coastal Construction and its agents. It therefore, remains the property of such and may not be reproduced in whole or in part without the written consent of Mark A. Saunders.

© Copyright, Coastal Construction of Eastern NC, Inc. - 2011

The Bartley

Total Heated: 2710

Bedrooms: 3

Baths: 3 ½

Width: 58'

Depth: 87'

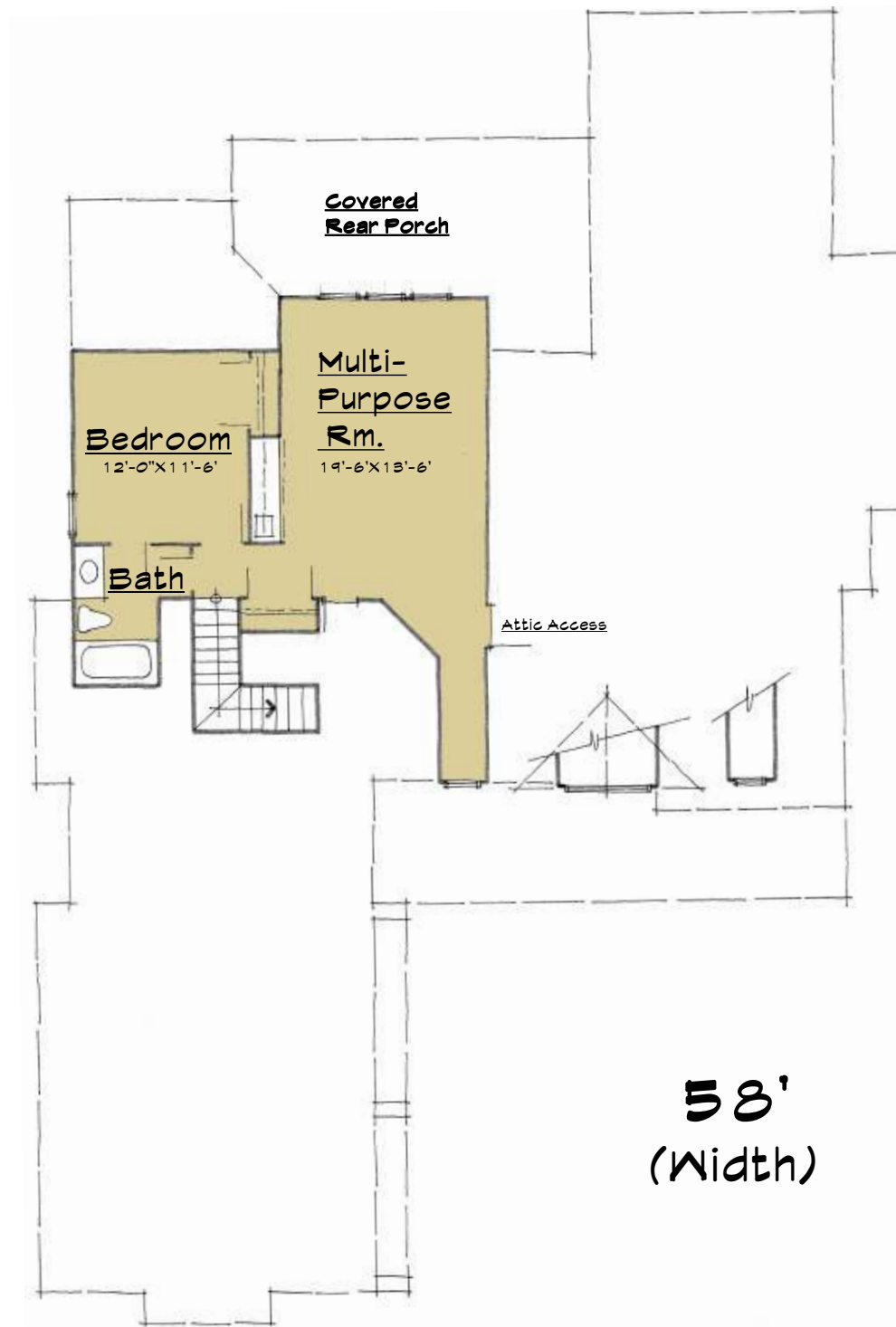
1st Floor: 2140

2nd Floor: 570

Garage Bonus: Optional

Covered Porches: 498

87'
(Depth)



58'
(Width)

SECOND FLOOR PLAN

The Bartley



Dimensions and square footage are approximate and may vary. Illustrations and floor plans are artist's conceptual renderings and are subject to change. Specifications, features, materials and prices are subject to change without Notice. Homes and site plans do not represent specifications defined in the Master Declaration of Covenants, Conditions, Restrictions, Easements, and Architectural Guidelines.

SGMS1b-2710-M11.8.7.11



the COASTAL
COMPANIES

MARK
SAUNDERS
LUXURY HOMES.

Mark A. Saunders

This drawing represents an instrument of service for the exclusive use of Coastal Construction and its agents. It therefore, remains the property of such and may not be reproduced in whole or in part without the written consent of Mark A. Saunders.

© Copyright, Coastal Construction of Eastern NC, Inc. - 2011

PLAN SPECIFICATIONS

GENERAL HOME INFORMATION

NUMBER OF STORIES: 1 1/2"
 WIDTH: 58'
 DEPTH: 87'
 DWELLING NUMBER: NA
 BONUS ACCESS: YES

FOUNDATION

FINISHED FLOOR ELEVATION: 24"
 SLAB FOUNDATION: yes
 RAISED SLAB FOUNDATION: yes
 PILING: na

EXTERIOR STYLE

Ocean Ridge Low Country Traditional

HOME AND CEILING HEIGHTS

GROUND FLOOR CEILING: na
 FIRST FLOOR CEILING: 9'
 SECOND FLOOR CEILING: 8'
 MAXIMUM HOME HEIGHT: 26'-6"

NUMBER OF ROOMS

BEDROOMS: 3
 FULL BATHS: 3 1/2

KEY FEATURES

MULTIPURPOSE ROOM
 FRONT PORCH
 SCREENED PORCH
 OPEN FLOOR PLAN
 MASTER SUITE
 WALK-IN CLOSETS
 WALK-IN PANTRY
 FIREPLACE
 COMPUTER ROOM

FINISHED/HEATED SQUARE FOOTAGE

GROUND FLOOR:
 FIRST FLOOR: 2140
 SECOND FLOOR: 570
 TOTAL: 2710

MULTIPURPOSE ROOM SQUARE FOOTAGE

TOTAL: na

GARAGE SQUARE FOOTAGE

TOTAL: 730

COVERED PORCH SQUARE FOOTAGE

TOTAL: 498

UNCOVERED DECK/PATIO SQ. FOOTAGE

TOTAL: 5420

IMPERVIOUS CALCULATIONS

HOUSE
 OVERHANGS
 DRIVE/MOTORCOURT

TOTAL

ALLOWABLE IMPERVIOUS



Dimensions and square footage are approximate and may vary. Illustrations and floor plans are artist's conceptual renderings and are subject to change. Specifications, features, materials and prices are subject to change without Notice. Homes and site plans do not represent specifications defined in the Master Declaration of Covenants, Conditions, Restrictions, Easements, and Architectural Guidelines.



Mark A. Saunders

This drawing represents an instrument of service for the exclusive use of Coastal Construction and its agents. It therefore, remains the property of such and may not be reproduced in whole or in part without the written consent of Mark A. Saunders.